

---

# **Embedding HIA into Purchasing Practice**

Christine Stewart  
On behalf of Chris Wong  
and Alex van Dyk

**NATIONAL  
HEALTH  
BOARD**

POARI HAUORA A-MOTU

# The team



## **Why would we want to embed HIA into purchasing practice?**

---

- Link policy and implementation/purchasing
- Purposeful planning
- Desired outcomes, not unintended consequences
- High quality health services
- Value for money



# What did we do?

The OPDP HIA training was the catalyst.

As a result, we:

- Formed our team
- Identified the key players/decision makers
- Got familiar with “doctrine”
- Got the right brains in the room
- Thought hard
- Drew lots of pictures
- Are giving it a go.

**NATIONAL  
HEALTH  
BOARD**

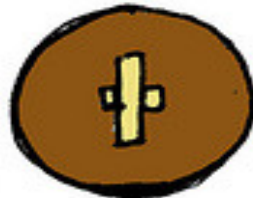
POARI HAUORA A-MOTU

# The tower of Babel





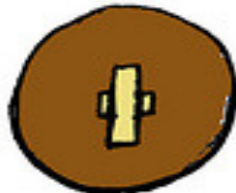
# No need to reinvent the wheel!



**1998: THE WHEEL**  
**STRATEGIC AND FOCUSED**



**2003: THE CYCLE**  
**FAR MORE STRATEGIC  
AND FOCUSED**



**2008: THE DISC**  
**INFINITELY MORE STRATEGIC  
AND FOCUSED**



James W Bell 16/9/08

As you can see -  
we're making progress!

**NATIONAL  
HEALTH  
BOARD**

POARI HAUORA A-MOTU

# Thinking and drawing



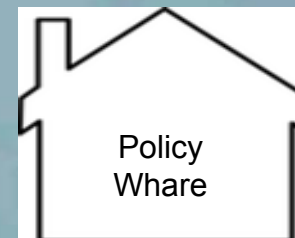
# Towards good health



Whanau Ora & Improved Health for Aotearoa NZ



Purchasing  
Whare

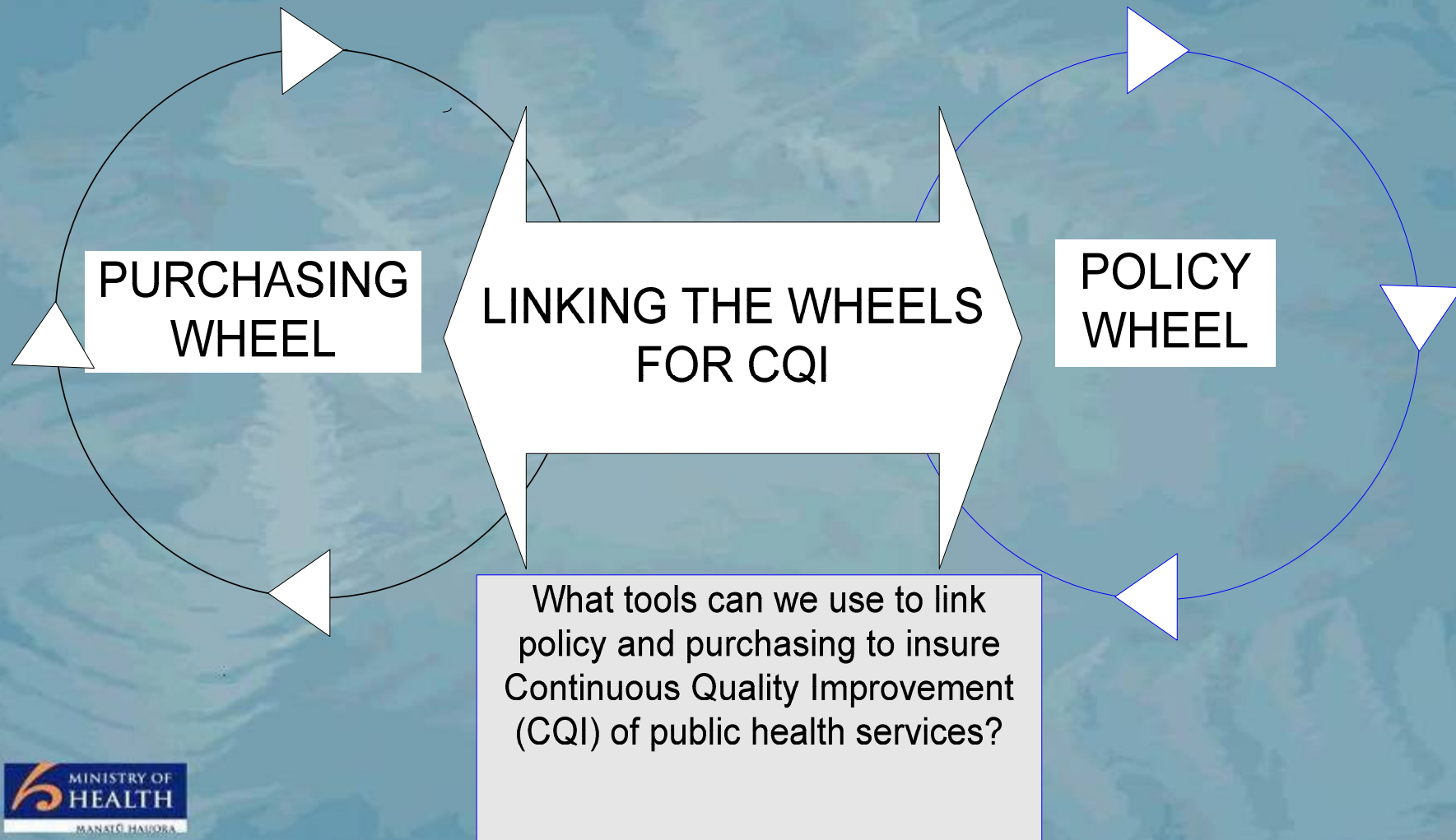


Policy  
Whare

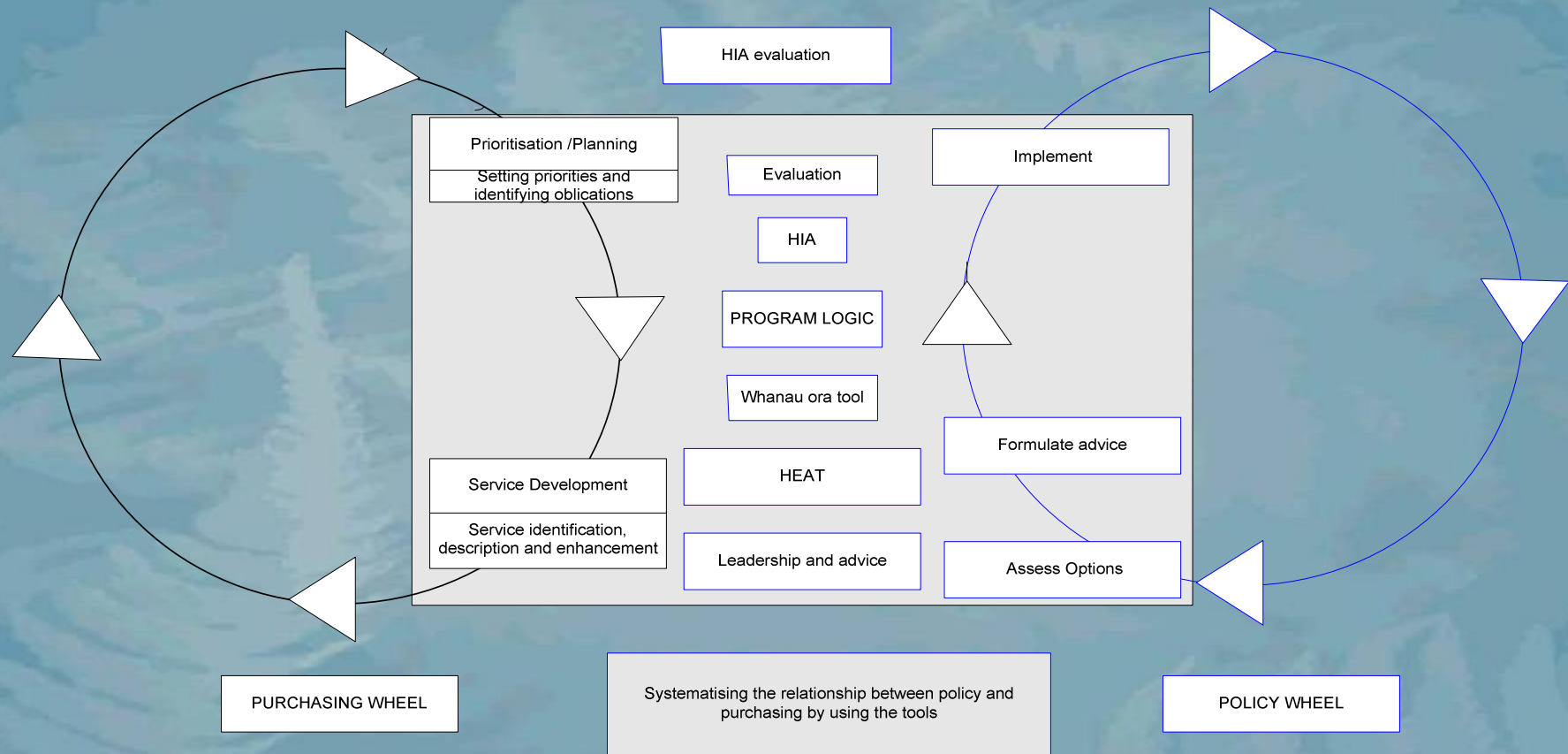
HIA EVALUATION PROGRAMME LOGIC



# Continuous quality improvement (CQI)



# The tool box



# Giving it a go...

- joint exercise between the communicable disease policy team and the operations contracting group
- to develop a better shared purpose, and aligned activities
- will use programme logic and HIA



**NATIONAL  
HEALTH  
BOARD**

POARI HAUORA A-MOTU

# The future...

---

**“All models are wrong but  
some models are useful.”**